

## IBC Cover

### Section 1: Information about the Manufacturer

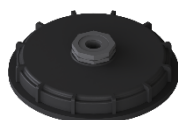
**Giebel FilTec GmbH**  
Carl-Zeiss-Str. 5  
74626 Bretzfeld-Schwabbach  
Germany  
Phone +49 7946 944401 0  
E-Mail [info@gf-dry.com](mailto:info@gf-dry.com)



### Section 2: Product Overview



IBCD\_150



IBCD\_225

#### Materials used:

Polypropylene, PVC, EPDM

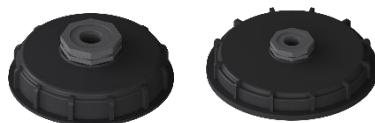
#### REACH notice:

No ingredients that must be named according to Regulation (EC) No. 1907/2006.

## Section 3: Structure and Materials

	IBCD_150   IBCD_225
Housing material	Polypropylene / PVC
Seal material	EPDM
IBC connection	NW 150 & NW 225
Adsorber connection	BSP G ¾" female
Operating temperature	-40°C - +80°C

## Section 4: Technical Data



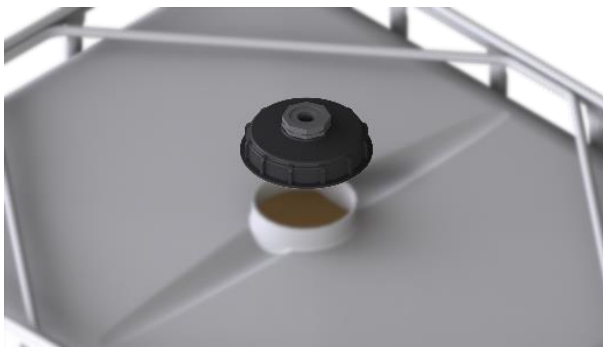
	IBCD_150	IBCD_225
Total weight [kg]	0,6	1,1
Diameter [mm]	189	272
Height [mm]	60,8	60,8

## Section 5: Storage

This product can be stored for up to **two years** in dark and dry environments. The temperatures for storage should be between -10° and 30°C.

## Section 6: Installation and Commissioning

1. Screw the IBC cover onto the IBC.
2. Screw the adsorber into the upper thread.



## Section 7: Maintenance

1. Unscrew the adsorber.
  2. Remove the IBC cover by unscrewing it.
  3. Check seal for damage.  
Replace with new if necessary.
  4. Screw the IBC cover onto the new IBC.
  5. Screw the adsorber into the IBC cover again.
- For this purpose, slightly oil the thread beforehand.

## Section 8: Risk and Hazard Analysis

### 1. Humid Air flows into the IBC

#### Porous gasket

Moist air can flow into the IBC at the porous points. The seal should be checked according to the maintenance schedule.

## 1. The IBC Cover is damaged

### Material resistance

When selecting the IBC cover, the ambient and operating conditions should be considered. An aggressive environment or liquid in the IBC may damage the IBC cover.

### Temperature Range

The ambient and operating temperatures should not exceed or fall below the specified range, otherwise the IBC cover may be damaged.

### Improper Handling

Incorrect or improper handling can damage the IBC cover. The recommended assembly must be observed.

## Section 9: Maintenance Plan

### 1. Check Seal for Wear

Check The seal installed in the IBC lid must be checked for perfect condition. For this purpose the seal should be examined for brittleness.

Cycle Annually

Measures If damage is present, the IBC lid should be replaced.

### 2. Visual Inspection of the IBC Cover

Check The IBC lid must be visually inspected for damage. Damage can occur due to various environmental or operating conditions or improper handling.

Cycle Annually

Measures If the IBC lid shows signs of damage, it should be replaced to ensure that the adsorber is fully functional.

### 3. Replacement of the Wearing Parts

Check The wearing parts, especially the seal, must be checked with regard to their condition.

Cycle Every two years

Measures Regardless of the result of the test, it is recommended to replace the wearing parts to ensure smooth operation.