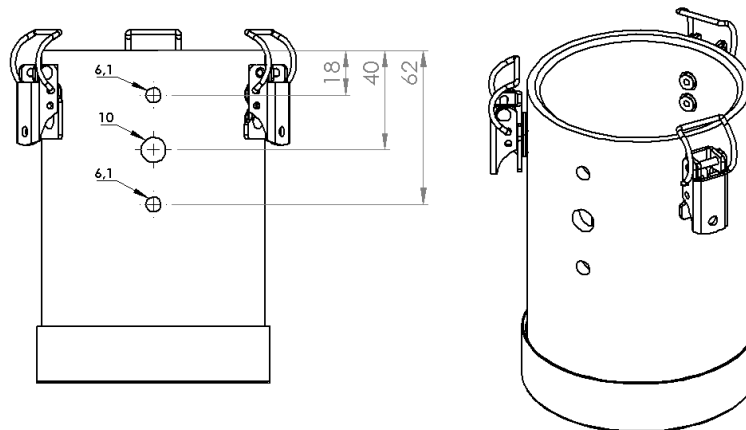


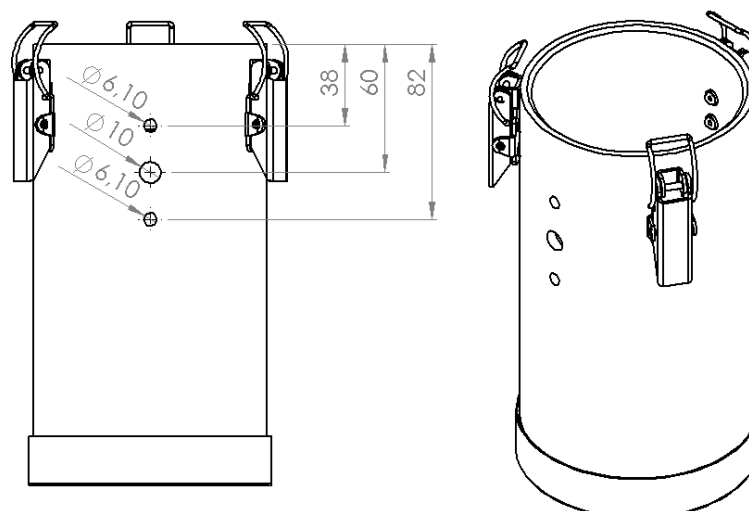
## Getting the Adsorber ready for GIEBEL Sense

### Step 1: Preparing Adsorber tube

- 1.1 For Adsorbers of size 2 series (e.g. VV-R 2M, MA-R 2L...)**  
Drill holes according to the drawing below (sizes in millimeters)



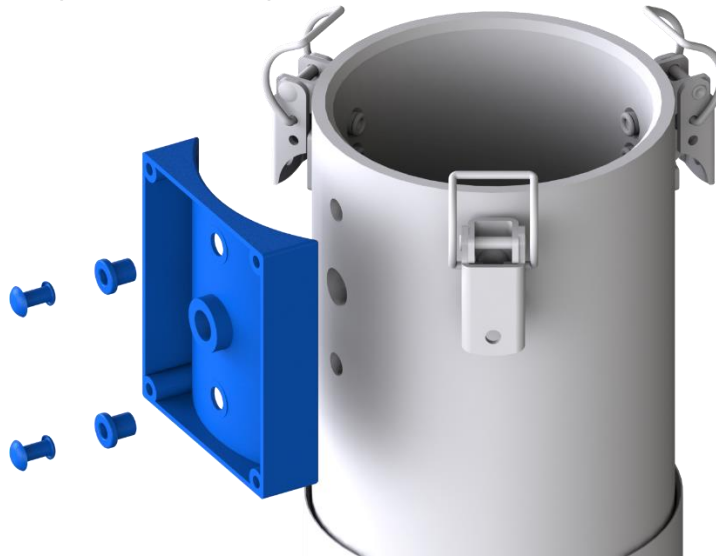
- 1.2 For Adsorbers of size 3 or 5 series (e.g. VV-R 3M, ME-RV 5L...)**  
Drill holes according to the drawing below (sizes in millimeters)



## Step 2: Mounting the adapter for GIEBEL Sense

### 1.1 Installing adapter

Place adapter onto the drilled holes, like in the picture below. Insert the slide bearings into the top and bottom holes and fixate the adapter with the help of rivets.



### 1.2 Placing PTFE membrane

Lastly, the PTFE membrane sticker has to be placed at inside of the tube onto the drill hole in the middle. The drill hole must be orientated to the middle of the sticker.

