

## FLANGE ADAPTER

### Section 1: Information about the Manufacturer

**Giebel FilTec GmbH**  
Carl-Zeiss-Str. 5  
74626 Bretzfeld-Schwabbach  
Germany  
Phone +49 7946 944401 0  
E-Mail [info@gf-dry.com](mailto:info@gf-dry.com)



### Section 2: Product Overview



FLA-LK41



FLA-LK73



FLA-LK73\_AL



FLA-LK73\_SS



FLA-LK75



FLA-ASP

#### Materials used:

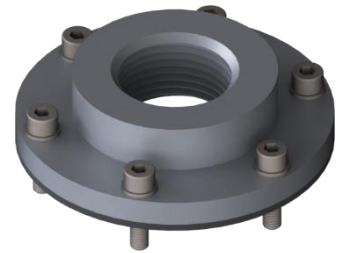
Aluminium, Stainless Steel, NBR, FKM, EPDM

#### REACH notice:

No ingredients requiring disclosure in accordance with Regulation (EC) No 1907/2006.

## Section 3: Construction and Materials

|                              | Flange Adapter                      |                    |           |
|------------------------------|-------------------------------------|--------------------|-----------|
|                              | FLA-LK41                            | FLA-LK73 / FLA-ASP | FLA-LK75  |
| <b>Housing material</b>      | Nylon / Aluminium / Stainless Steel |                    | Aluminium |
| <b>Seal material</b>         | NBR / FKM / EPDM                    |                    |           |
| <b>Adsorber connection</b>   | BSP G 1/2" female                   | BSP G 1" female    |           |
| <b>System connection</b>     | LK 41mm                             | LK 73mm (DIN24557) | LK 75mm   |
| <b>Operating temperature</b> | -40°C - +150°C                      |                    |           |



## Section 4: Technical Data



|                   | FLA-LK41 | FLA-LK73 | FLA-LK73_AL | FLA-LK73_SS | FLA-LK75 | FLA-ASP |
|-------------------|----------|----------|-------------|-------------|----------|---------|
| Total weight [kg] | 0,03     | 0,06     | 0,18        | 0,26        | 0,2      | 0,3     |
| Diameter [mm]     | 52       | 85       | 85          | 85          | 85       | 85      |
| Height [mm]       | 21,5     | 27       | 22          | 22          | 22       | 33      |

## Section 5: Assembly and Commissioning

1. Place the flat gasket on the system according to the bolt circle.
2. Place the flange adapter on the flat gasket and align according to the bolt circle.
3. Screw in and tighten screws with washers.
4. Screw the adsorber into the upper thread. For this purpose, oil the thread slightly beforehand.



## Section 5: Storage

This product can be stored for up to **two years** in dark and dry environments. The temperatures for storage should be between  $-10^{\circ}$  and  $30^{\circ}\text{C}$ .

## Section 6: Maintenance

1. Unscrew the adsorber.
2. Remove the screws from the flange adapter.
3. Remove flange and check flat gasket for damage. If necessary, replace with new ones.

## Section 7: Risk and Hazard Analysis

### 1. Humid Air flows into the System

#### Porous gasket

Moist air can flow into the system at the porous points. The seal must be checked according to the maintenance schedule.

### 2. Flange Adapter is damaged

#### Material resistance

When selecting the flange adapter, the ambient and operating conditions should be considered. An aggressive environment or liquid in the container can damage the flange adapter.

#### Temperature range

The ambient and operating temperatures should not exceed or fall below the specified range, otherwise the flange adapter may be damaged.

#### Improper handling

Incorrect or improper handling can damage the flange adapter. Please pay attention to the recommended mounting.

### 3. Thread of the Adsorber and Accessories is damaged

When mounting the adsorber as well as the valve part on the system, the threads must be slightly wetted with oil. Failing to lubricate the threads can lead to it rubbing off and getting stuck.



## Section 8: Maintenance Plan

### 1. Check Seal for Wear

Check The flat gasket supplied with the flange adapter must be checked for perfect condition. For this purpose the gasket should be checked for brittleness.

Cycle Annually

Measures If damage is present, the seal should be replaced.

## 2. Visual Inspection of the Flange Adapter

Check The flange adapter must be checked visually for damage. Damage can occur due to various environmental or operating conditions or improper handling.

Cycle Annually

Measures If the flange adapter is damaged, it should be replaced to ensure full functionality.

## 3. Replacement of the Wearing Parts

Check The wearing parts, especially the seal, must be checked with regard to their condition.

Cycle Every two years

Measures Regardless of the result of the test, it is recommended to replace the wearing parts to ensure smooth operation.